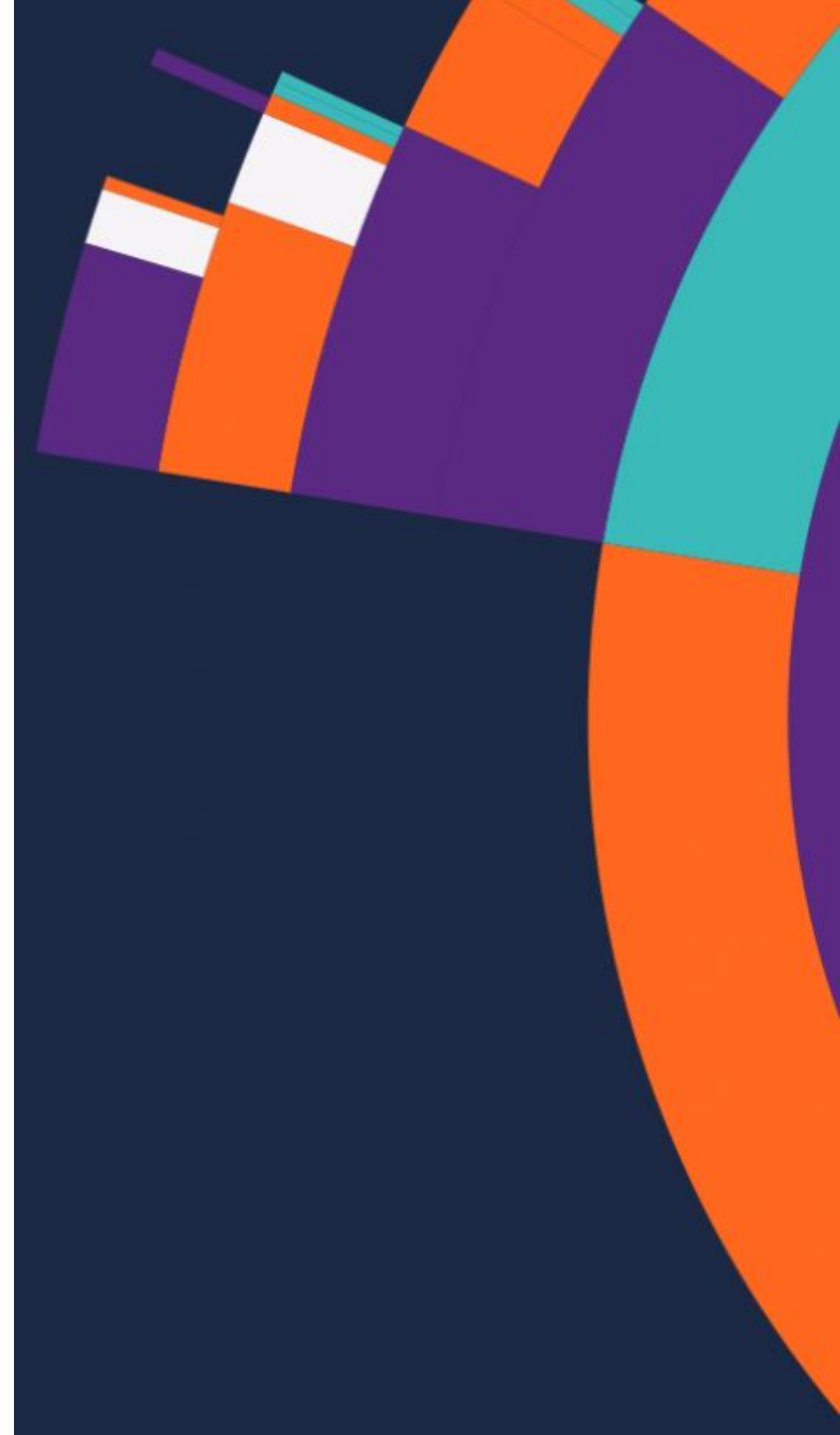


VIB Technology Ecosystem

Silvie Van den Hoecke, Project Manager Technologies Program
Niels Vandamme, Head of VIB Single Cell Core

Oct. 21st, 2022





Flanders Institute for Biotechnology

SCIENCE



ECONOMIC IMPACT



ENABLE TECHNOLOGIES



VIB invests in a stimulating science environment:



people

recruitment, scientific independence, careers, training, well-being



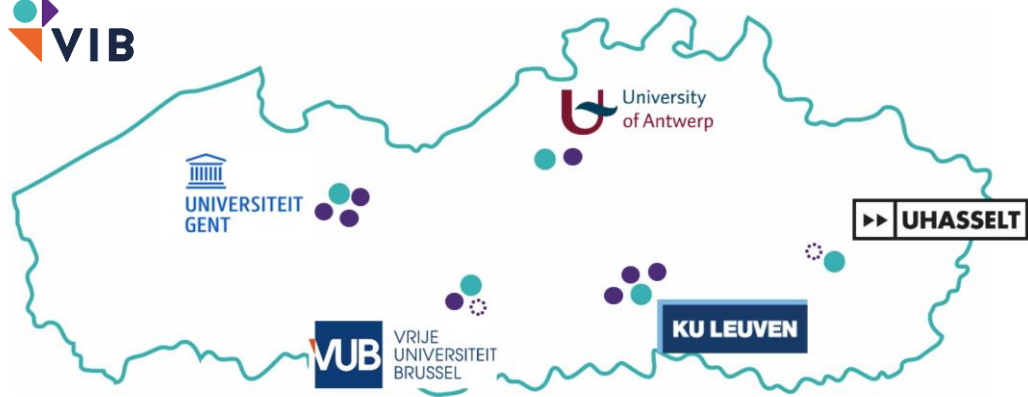
technology

equipment, tech watch, core facilities



accommodation

state-of-the-art facilities embedded in universities across Flanders

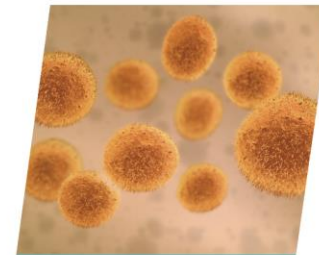


5 partner universities

90 individual labs

9 thematic centers

1900 employees



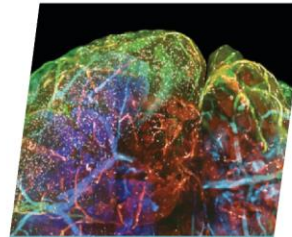
inflammation research



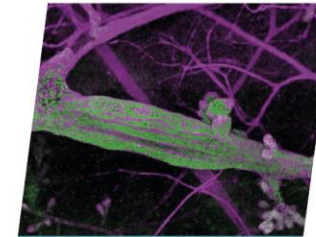
plant systems biology



biomedical biotechnology



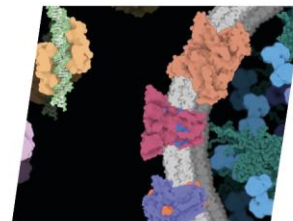
brain & disease research



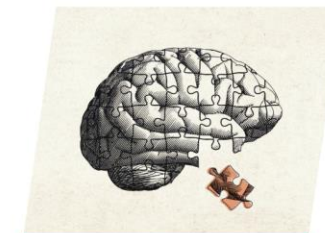
cancer biology



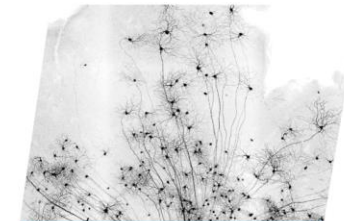
microbiology



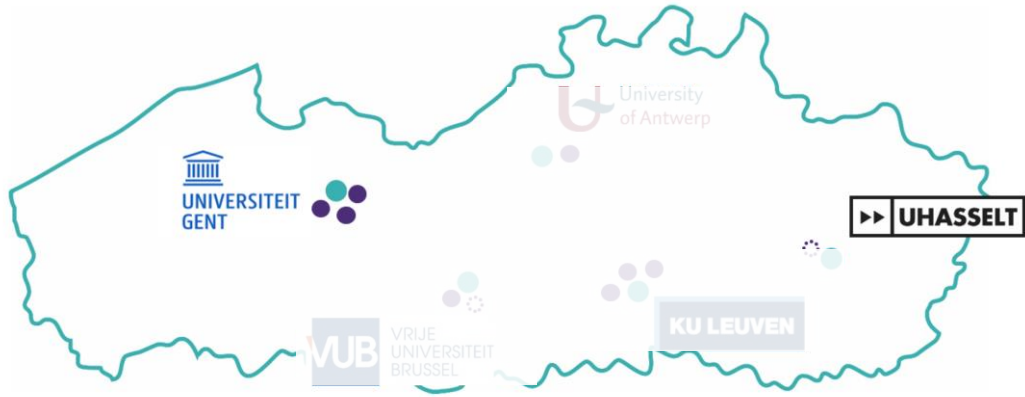
structural biology



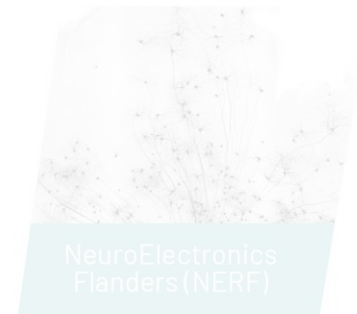
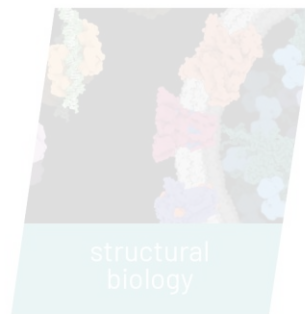
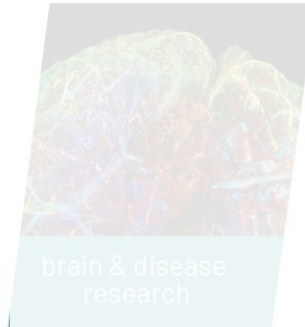
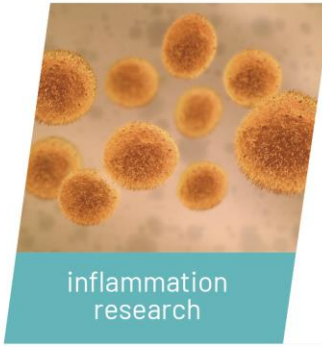
molecular neurology



NeuroElectronics Flanders (NERF)



5 partner universities
90 individual labs
9 thematic centers
1900 employees





5 partner universities
90 individual labs
9 thematic centers
1900 employees



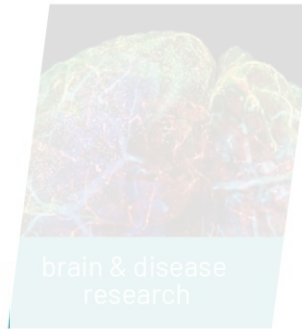
inflammation research



plant systems biology



biomedical biotechnology



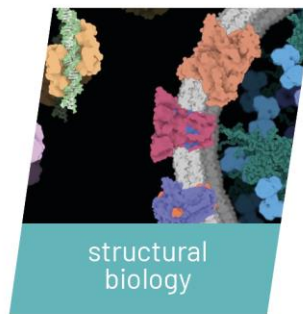
brain & disease research



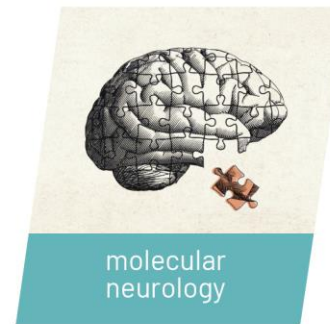
cancer biology



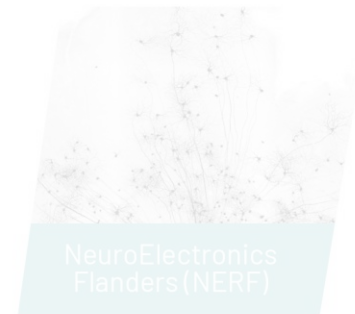
microbiology



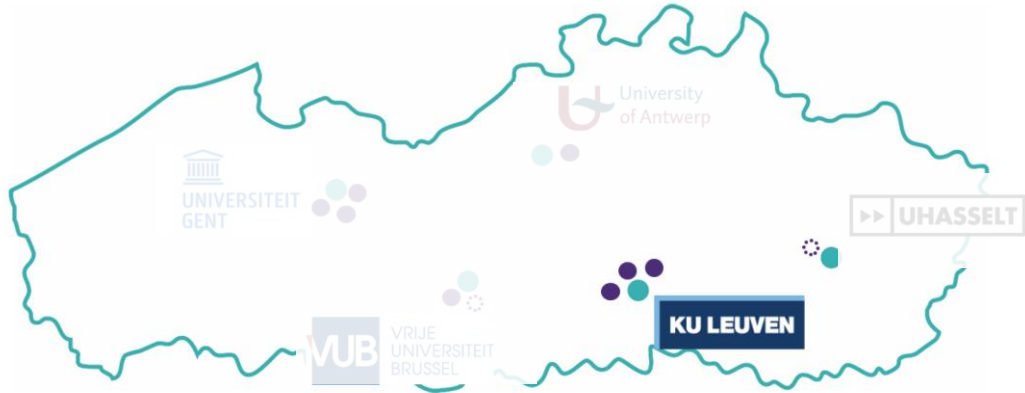
structural biology



molecular neurology



NeuroElectronics Flanders (NERF)



5 partner universities

90 individual labs

9 thematic centers

1900 employees



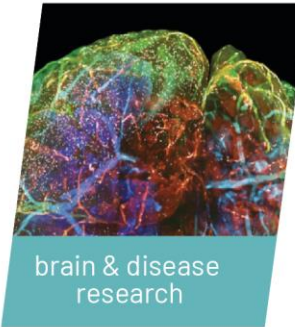
inflammation research



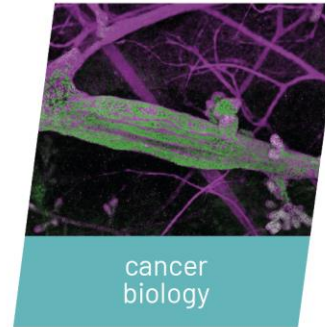
plant systems biology



biomedical biotechnology



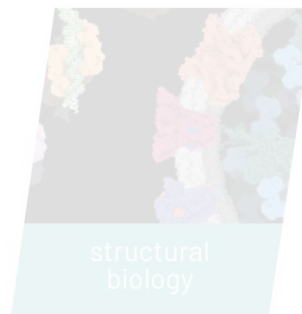
brain & disease research



cancer biology



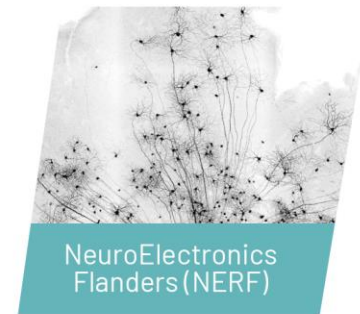
microbiology



structural biology

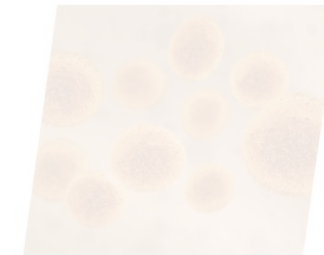


molecular neurology



NeuroElectronics Flanders (NERF)

Several **VIB-KU Leuven** labs
are member of LISCO & LKI



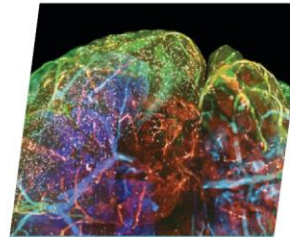
inflammation
research



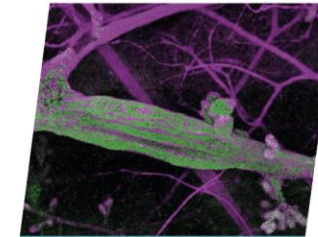
plant systems
biology



biomedical
biotechnology



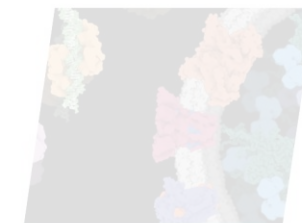
brain & disease
research



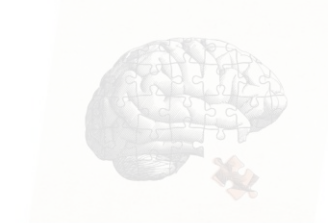
cancer
biology



microbiology



structural
biology



molecular
neurology



NeuroElectronics
Flanders (NERF)

SCIENCE



ECONOMIC IMPACT

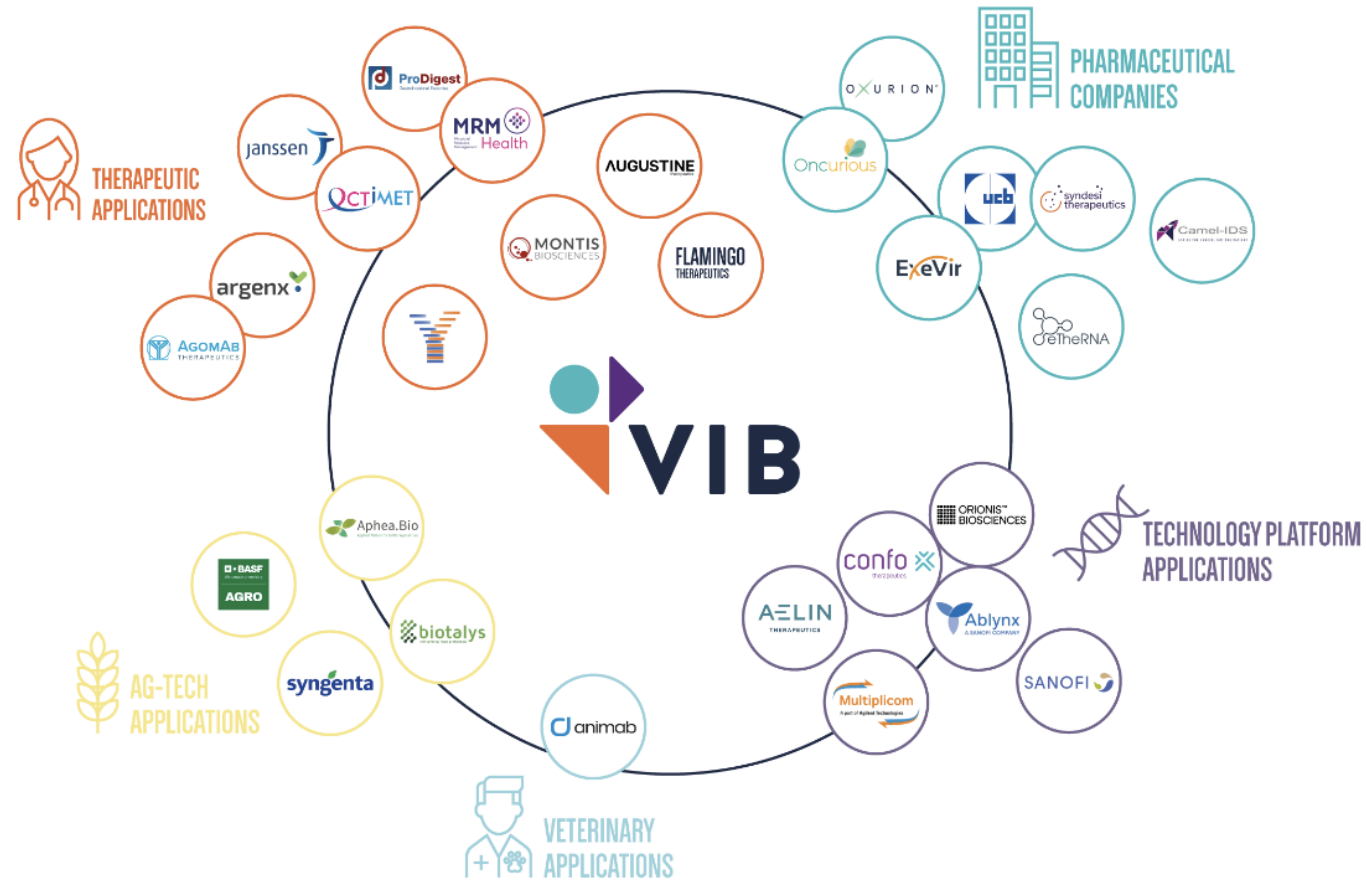


ENABLE TECHNOLOGIES





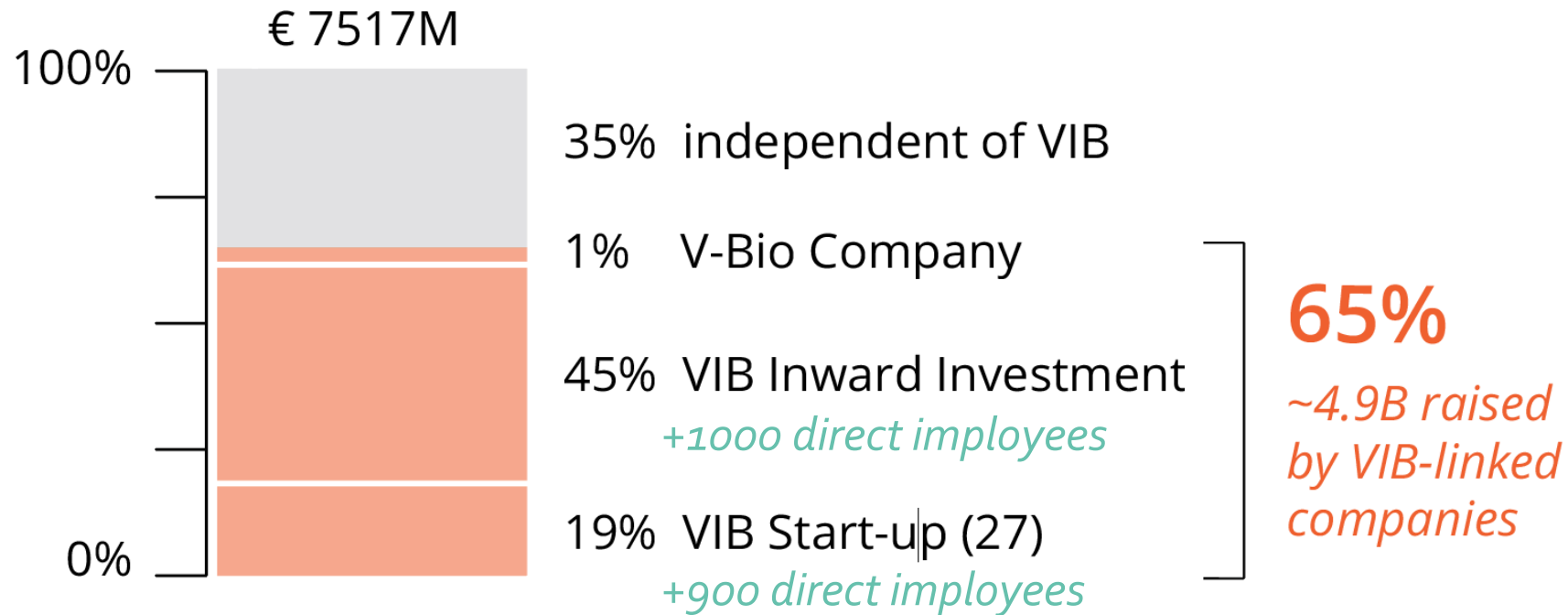
Economic impact: Flanders' biotech ecosystem





Economic impact: Flanders' biotech ecosystem

Cumulative Capital raised by Life Science Startups in Flanders



SCIENCE



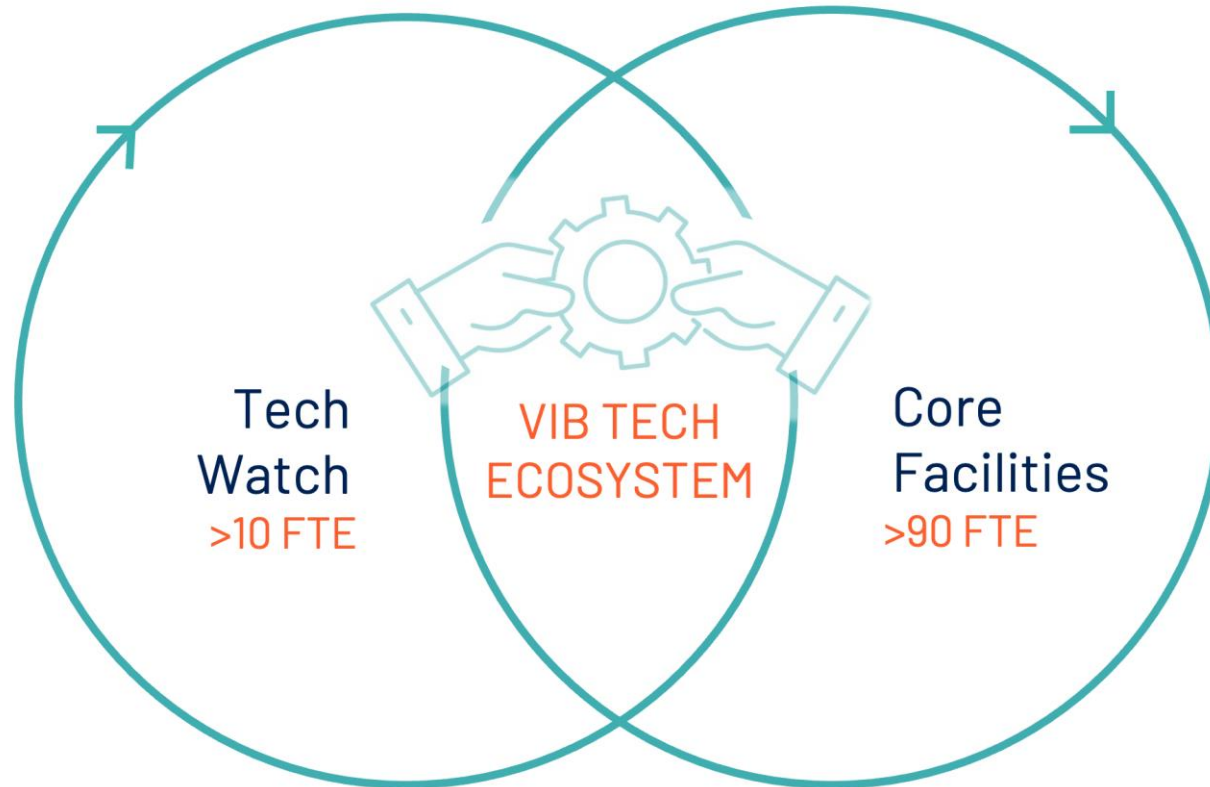
ECONOMIC IMPACT



ENABLE TECHNOLOGIES



VIB's Technology Ecosystem



IMPACT ON RESEARCH

- > 350 AUTHORSHIPS
- > 350 ACKNOWLEDGEMENTS
- > 8,000 TRAINEES



VALORIZATION

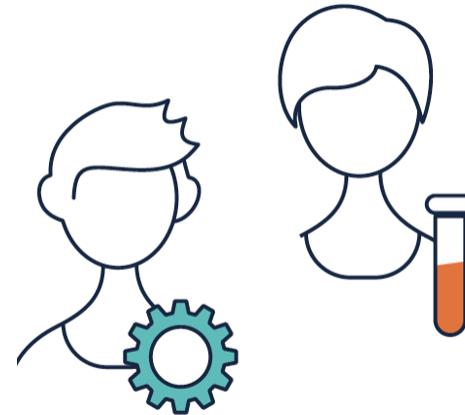
27 PATENTS
YEARLY INDUSTRIAL INCOME
3.6 M€

VIB's Technology Ecosystem

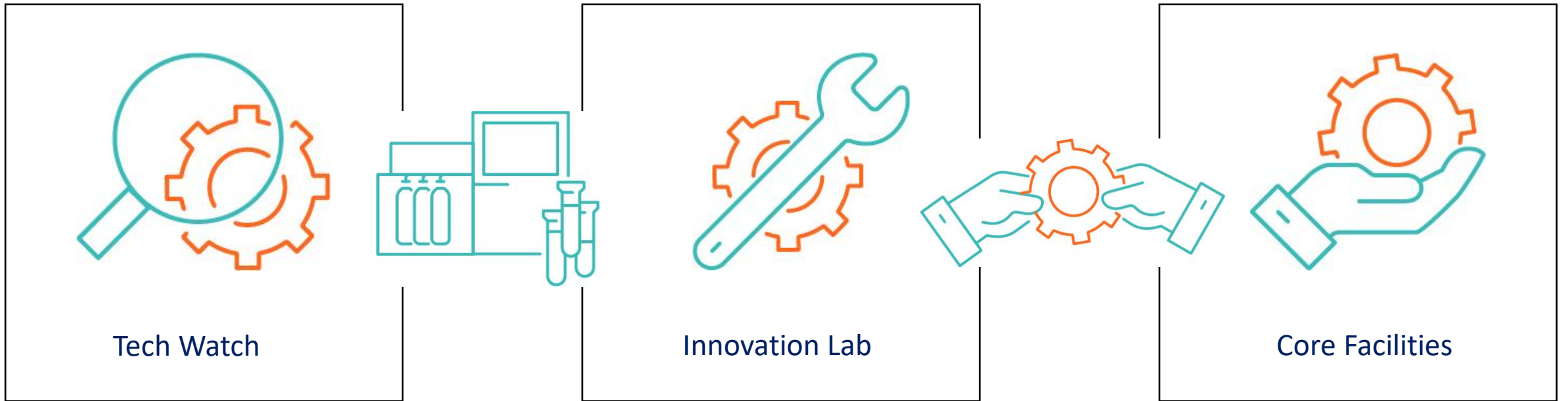
Where Science meets Technology



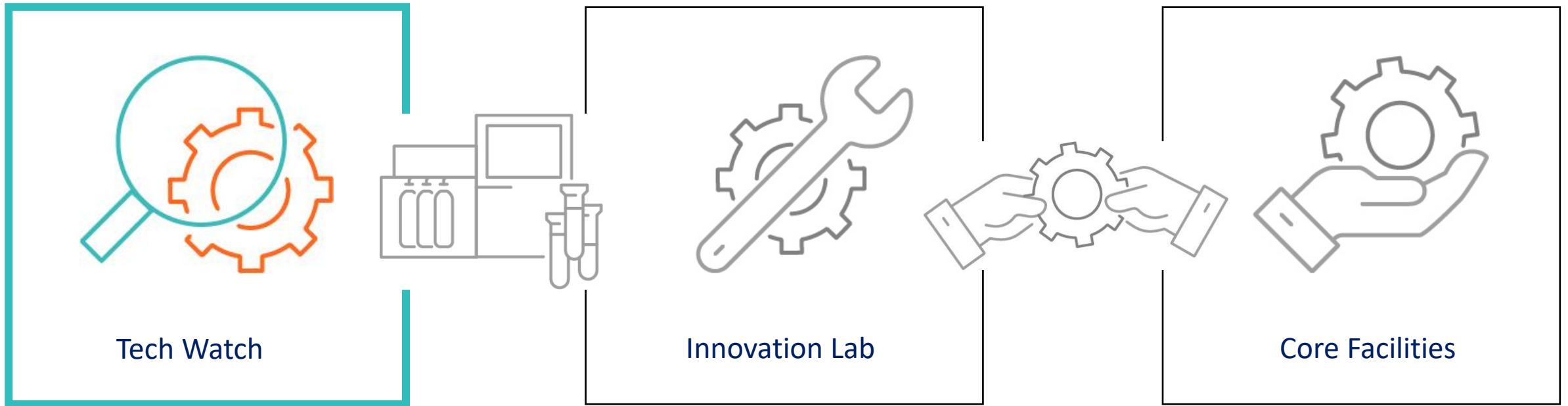
Where Scientists meet Technology Experts



VIB's Technology Ecosystem

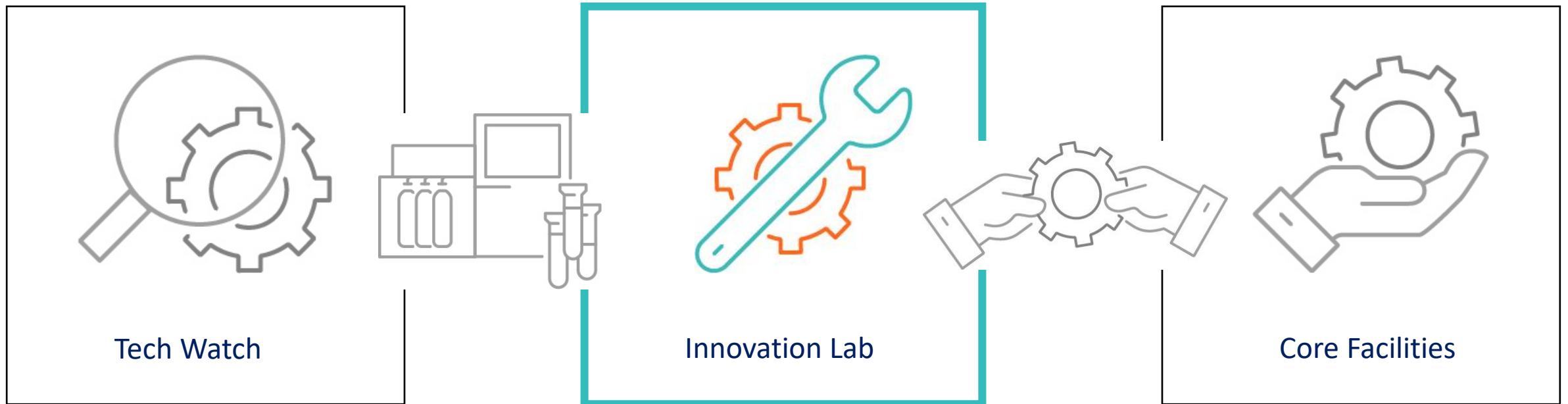


VIB's Technology Ecosystem



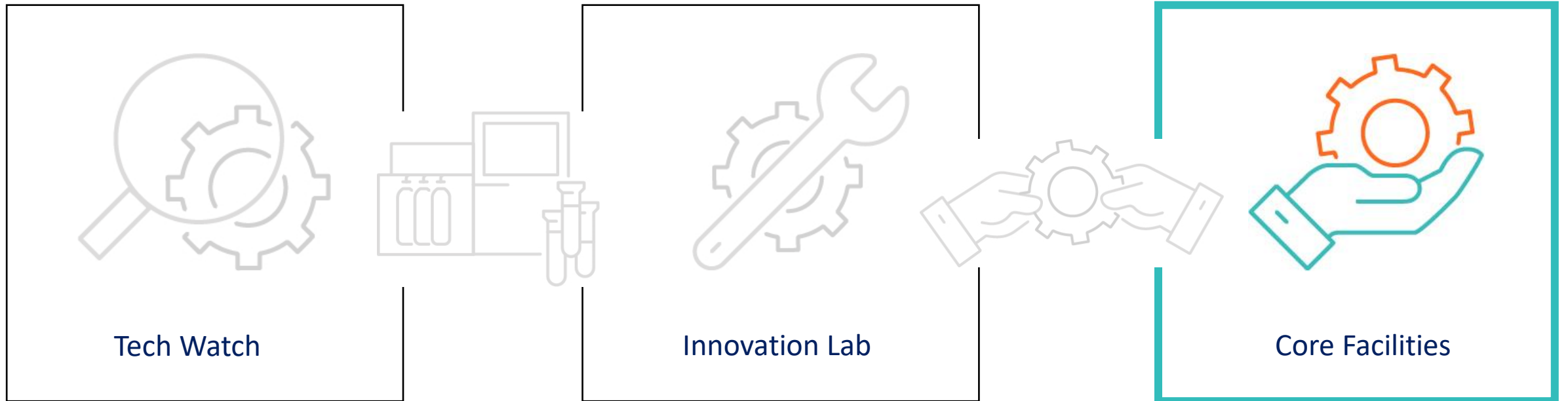
fueling disruptive innovation: identification of & enabling access to emerging technologies

VIB's Technology Ecosystem



hands-on evaluation, benchmarking & optimization of cutting-edge methodologies/technologies

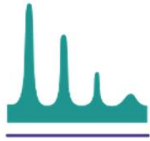
VIB's Technology Ecosystem



accelerating science: access to cutting-edge technologies



Biolmaging Core



Proteomics Core



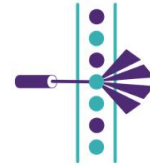
Screening Core



Nucleomics Core



Metabolomics Core



Flow Core



Protein Core



Nanobody Core



Single Cell Core



All-in service



Training



Collaboration



Technology



VIB SINGLE CELL CORE

Jan-Sept 2022

133 projects 

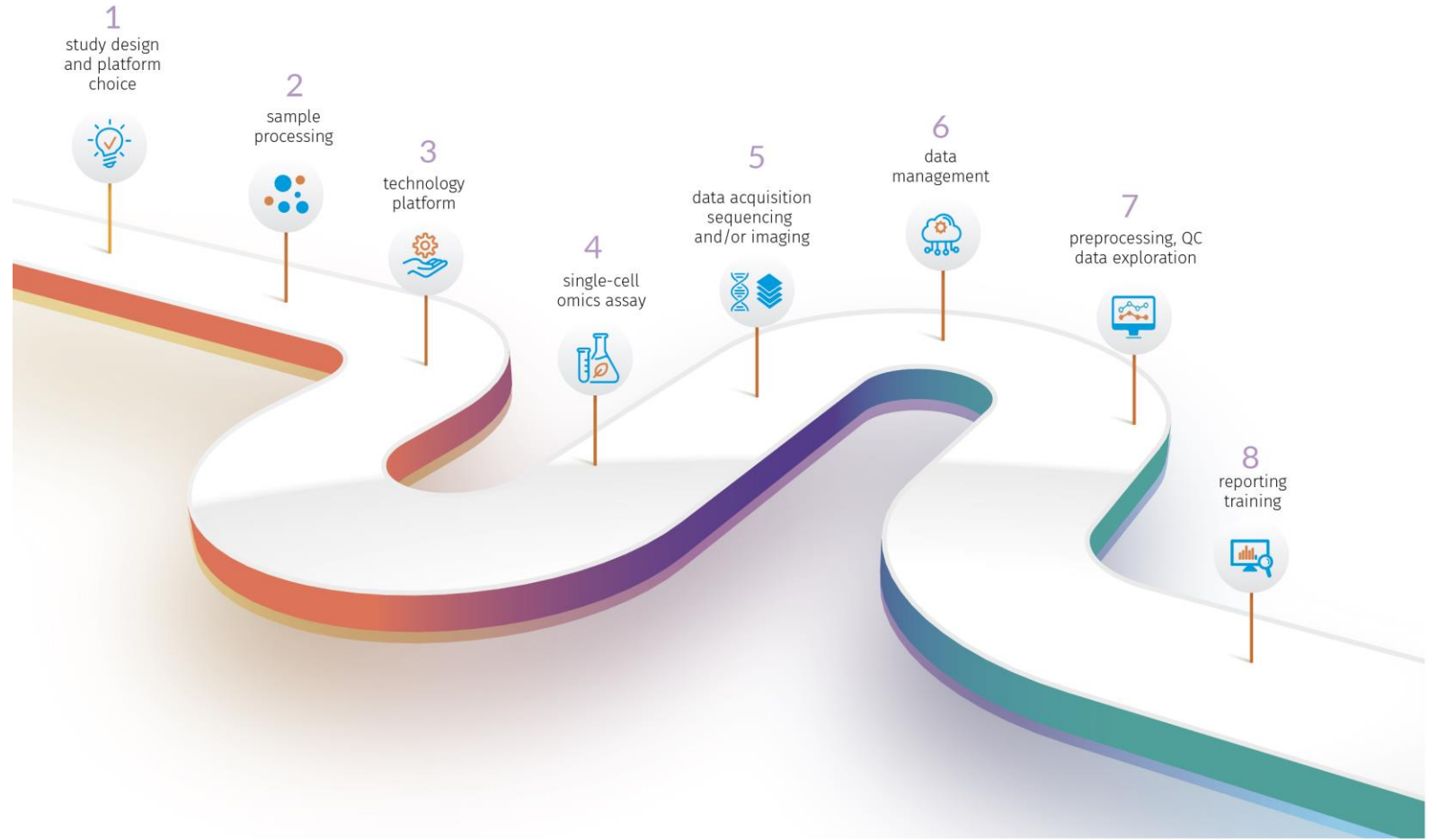
753 samples 

76 scientists 

44 labs 

6 trainings 

96 trainees 



										<ul style="list-style-type: none"> project management wetlab bioinformatics
head Niels	expert Thomas	expert Ria	technician Melanie	technician Jeroen	sys admin/bioIT Kevin	bioIT Jana	admin support Karo	FE-dev	PM	

VIB Core Facilities



Bioinformatics Core >



Bioimaging Core Ghent >



Bioimaging Core Leuven >



Flow Core Ghent >



Metabolomics Core
Gent >



Metabolomics Core
Leuven >



Nanobody Core >



Nucleomics Core >



Protein Core >



Proteomics Core >



Screening Core >



Single Cell Core >

Services and collaborations:
connect.vib.be

A woman with long dark hair, wearing a light blue surgical face mask, is looking intently at a large computer monitor. The monitor displays a complex scientific interface with a grid of small images and several larger plots. The top part of the screen shows a grid of small, colorful images (possibly microscopy or spectroscopy data) arranged in a grid. Below this, there are several larger plots, including a 2D heatmap, a 3D surface plot, and several line graphs with peaks. The overall scene is dimly lit, with a blueish tint, suggesting a laboratory or research environment.

www.VIB.be/technology

Reach out:

Silvie.Vandenhoecke@VIB.be

Niels.Vandamme@VIB.be